



Geometry Art

Vasily
Kandinsky

Review: Make sure you know the definition of
and can draw each of the geometric figures
below.

Line

Line segment

Point

Ray

Acute angle

Obtuse angle

Right angle

Reflex Angle

Equilateral triangle

Obtuse isosceles triangle

Right isosceles triangle

Obtuse scalene triangle

Right scalene triangle

Square

Rectangle

Trapezoid

Parallelogram

Rhombus

Parallel lines / line segments

Perpendicular lines / line segments

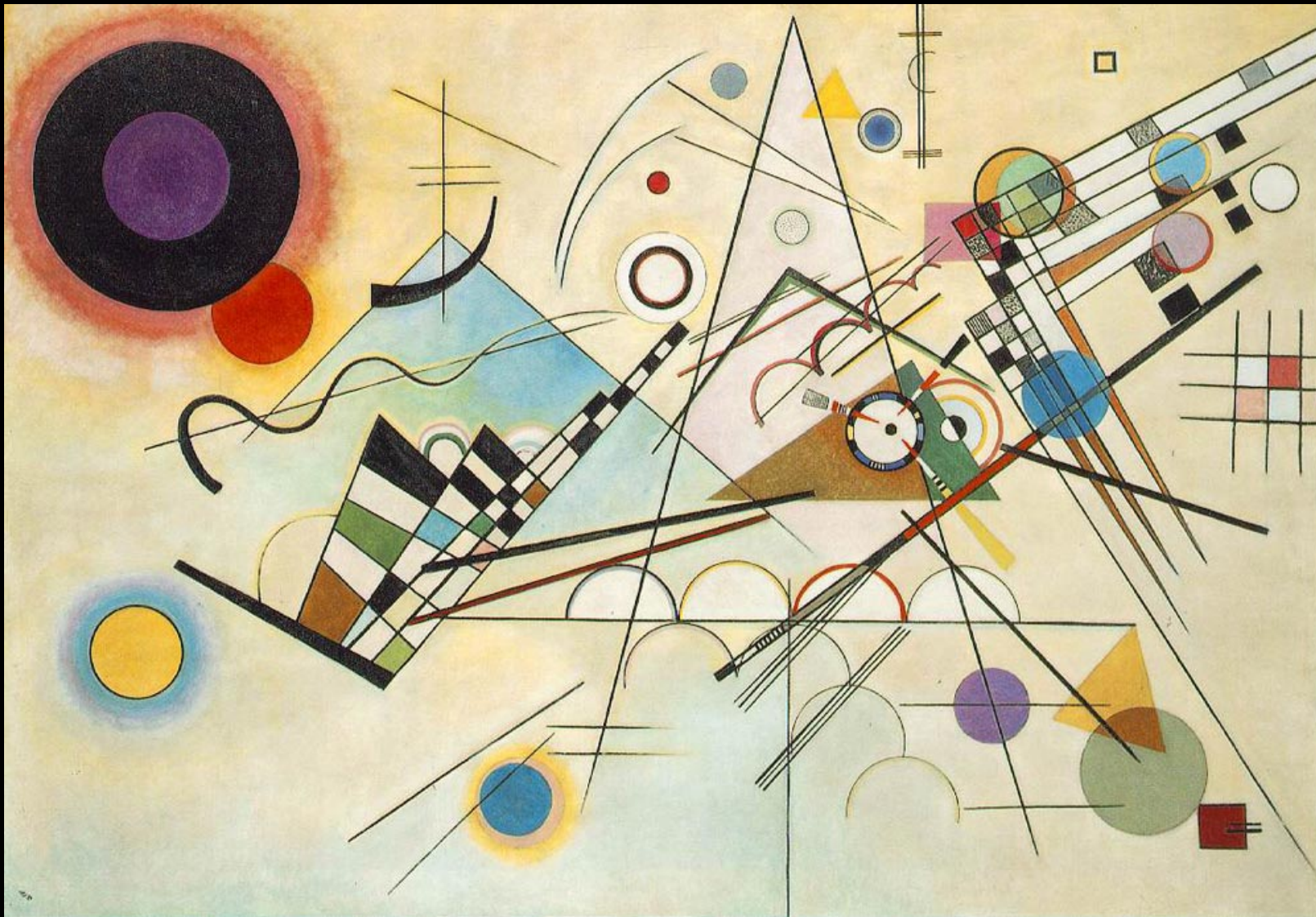
Intersecting lines / line segments

Circle

Many famous artists applied geometry to their works of art.

Vasily Kandinsky is well known for including geometric elements in his abstract pieces. Continue through the slideshow to learn about Kandinsky and analyze some of his famous pieces.

You will then apply Kandinsky's techniques to create your own geometric abstract art.



What geometric shapes do you see in this painting?

What images do you see?

What comes to mind?



What geometric shapes do you see in this painting?

What images do you see?

What comes to mind?



What
geometric
shapes do
you see in
this
painting?

What images
do you see?

What comes
to mind?



What geometric shapes do you see in this painting?

What images do you see?

What comes to mind?



- *Vasily Kandinsky was born in Russia.*
- *He is credited as a leader of abstraction in painting in the early 20th century.*

Kandinsky
was born in
Moscow on
December 4,
1866.





This is an early painting he did as a boy. Notice how this work is different than his later works. Look at his use of color.

Two events influenced Kandinsky's art:

1. Claude Monet's *Haystacks*



2. Hearing

Wagner's *Lohengrin* at
the Bolshoi Theatre.

[https://youtu.be/-tCr-
Yo-RZI](https://youtu.be/-tCr-Yo-RZI)



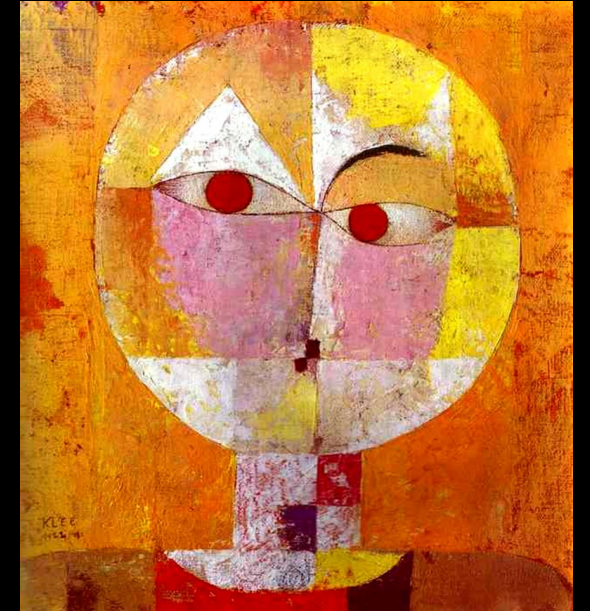
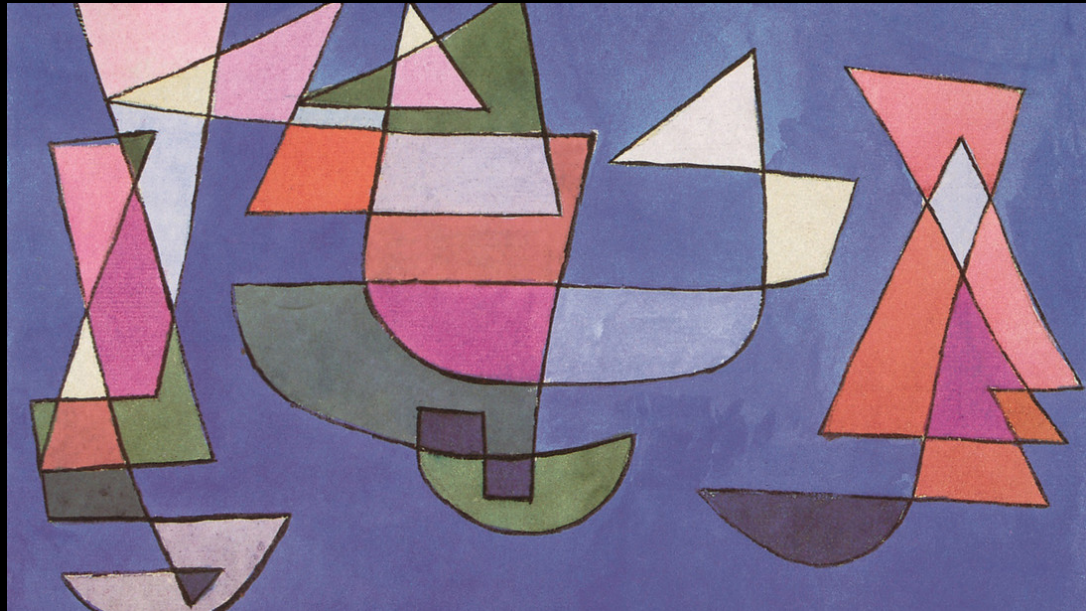
- *Kandinsky's artwork show a connection between music and color.*
- *By the first decade of the 20th century (1900-1910), his status rose to the father of abstract art.*



- *He began to use color to express emotion.*
- *What emotions do you think he had or do you feel yourself when looking at this piece?*



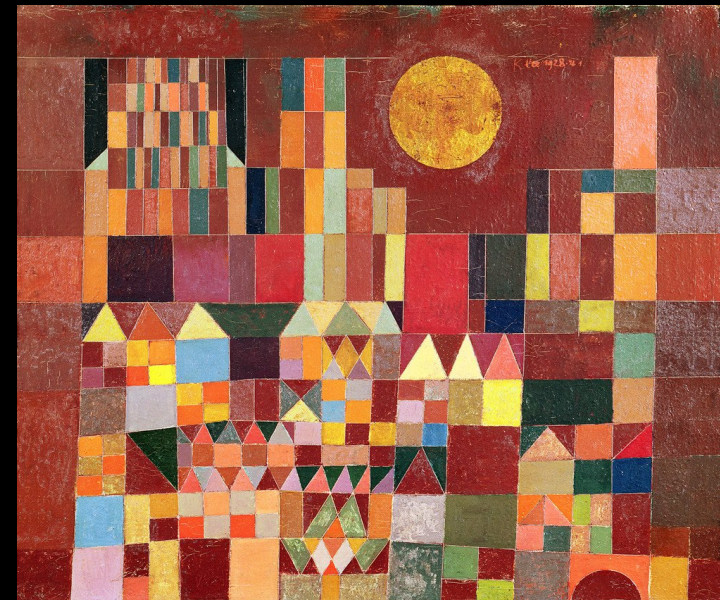
He became friends with other painters of the time, such as Paul Klee.



Paul Klee

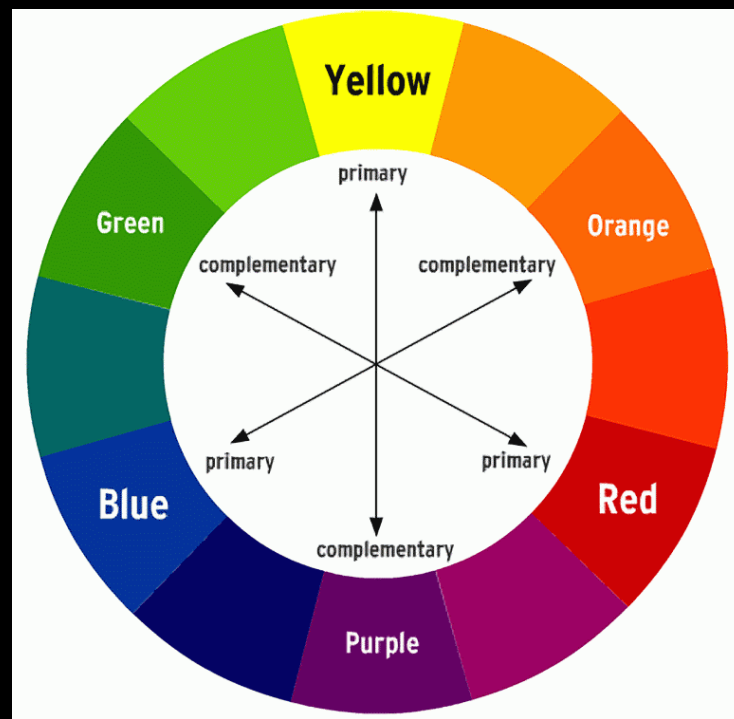
Kandinsky

What is similar about Kandinsky's and Klee's art? What is different?



- Kandinsky started teaching art in the 1920s. He taught at an art school in Germany.
- During World War II, the Nazis confiscated 57 Kandinsky paintings.
- Kandinsky died of cerebrovascular disease in Neuilly-sur-Seine, France, on December 13, 1944.





Kandinsky Art Project

Your art must include at least one of each of the following:

Line
Line segment
Point
Ray
Acute angle
Obtuse angle
Right angle
Reflex Angle
Equilateral triangle
Obtuse isosceles triangle
Right isosceles triangle
Obtuse scalene triangle
Right scalene triangle
Square
Rectangle

Trapezoid
Parallelogram
Rhombus
Parallel lines / line segments
Perpendicular lines / line segments
Intersecting lines / line segments
Circle

Now it's your turn to create your own Kandinsky style abstract art.

1. Use any medium of art (paint, crayons, color pencils, watercolor, ripped construction paper, iPad/tablet art app, etc.)
2. Your art can be any size.
3. You need to include at least one of each geometric figure listed on the left. Keep in mind that many of the figures will count toward another figure. For example, by drawing 2 intersecting line segments, you're also drawing an acute and obtuse angle.
4. Kandinsky used a lot of color. Look back at the images in the PowerPoint to see how he used color and geometric shapes in his design.
5. BE CREATIVE and HAVE FUN!